



## Hybrid Central Axis 2.0

Powerful Ceiling Suspension System for a Wide Reaching Radius

# MAVIG



### Hybrid Central Axis System 2.0

The MAVIG suspension system is equipped with extra long extension arms to give the system an extended and stable reach. This is especially useful for crowded ceiling space in today's multifunctional rooms or to keep suspended equipment outside of the sterile zone.

The system can support up to two arms, each able to suspend up to 21 kg / 46.3 lbs. The possibility of a limited rotation (between 60° and 360° with incremental rotation stop every 22.5° on the column) and multiple arm lengths, the hybrid central axis allows great flexibility for room planning and equipment placement demands.

- **Extra long extension arms for a wide reaching radius**
- **Patented Portegra2 safety features:**  
**Internal safety spring, safety cable catch, secondary pin lock**
- **Variable rotation stops for individual room adaptation**
- **For one or two end devices, each up to 21 kg / 46.3 lbs**
- **Adjustable ceiling substructure to facilitate installation**



Canopy Cover  
(Ø 360 mm, two-part)

SINGLE-ARM AND  
DUAL-ARM SYSTEMS

Ceiling Column  
(stationary mounted)

Extension Arms  
(for a wide reaching radius)

360°

22.5° Steps

see table / overview on page 5

168

205



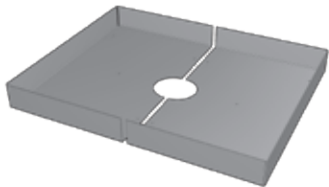
# Flexible Ceiling Mounting

## Mounting Plate, Height Adjustable Ceiling Substructures, and Column Covers

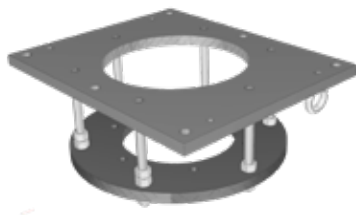
Mounting plate and substructures allow an installation adapted to the respective ceiling. It does not matter whether the system is installed on a solid ceiling, metal framing system like HALFEN/Unistrut® or an intermediate ceiling. Ceiling unevenness or minor mis-measurements can thus be compensated for with little effort.



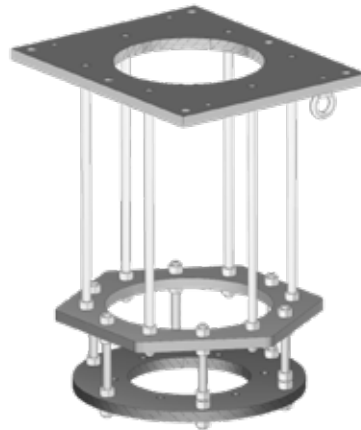
**Ceiling Mounting Plate (HZIP03), incl. mounting accessories for the HCA column**  
suitable for HALFEN/Unistrut® systems  
(20 x 590 x 740 mm (H x W x D))



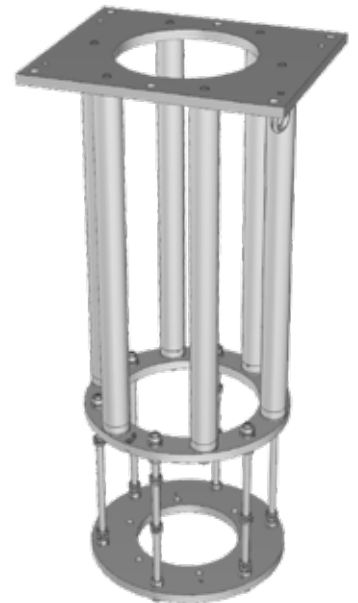
**Cover (CY0005) for Mounting Plate HZIP03**  
two-piece, 78 x 600 x 750 mm (H x W x D)



**Short Ceiling Substructure, including mounting plate (GD60D012)**  
variable distance: up to 175 mm,  
for bridging short gaps



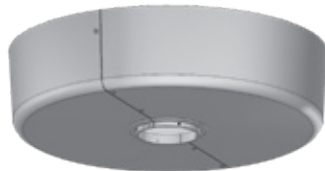
**Medium Ceiling Substructure, including mounting plate (GD60D022)**  
variable distance: 175 - 610 mm,  
for bridging medium gaps



**Large Ceiling Substructure, including mounting plate (GD60D042)**  
variable distance: 610 - 1115 mm,  
for bridging large gaps



**Column Cover (CY0001)**  
two-piece (Ø 360 mm, height 124 mm)



**Column Cover (CY0002)**  
two-piece (Ø 600 mm, height 152 mm)



**Column Cover (CY0003)**  
two-piece (Ø 600 mm, height 52 mm)



**Column Cover (CY0004)**  
two-piece (Ø 600 mm, height 4 mm)

### COMPONENT AND DESCRIPTIONS

### (article number)

#### Ceiling Columns (without column cover)

- 125 mm ceiling column
- 200 mm ceiling column
- 300 mm ceiling column
- 400 mm ceiling column
- 500 mm ceiling column
- 600 mm ceiling column
- 800 mm ceiling column
- 1000 mm ceiling column
- 1200 mm ceiling column

- (HZAUCC00125)
- (HZAUCC00200)
- (HZAUCC00300)
- (HZAUCC00400)
- (HZAUCC00500)
- (HZAUCC00600)
- (HZAUCC00800)
- (HZAUCC01000)
- (HZAUCC01200)

Further column lengths on request

#### Canopy (column cover)

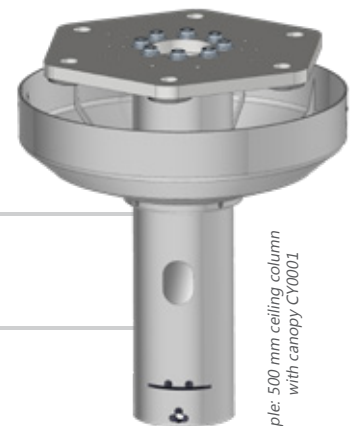
- Two-piece, Ø 360 mm, height 124 mm
- Two-piece, Ø 600 mm, height 152 mm
- Two-piece, Ø 600 mm, height 52 mm
- Two-piece, Ø 600 mm, height 4 mm

- (CY0001)
- (CY0002)
- (CY0003)
- (CY0004)

#### Ceiling Columns (with canopy CY0001)

- 125 mm ceiling column + CY0001
- 200 mm ceiling column + CY0001
- 300 mm ceiling column + CY0001
- 400 mm ceiling column + CY0001
- 500 mm ceiling column + CY0001
- 600 mm ceiling column + CY0001
- 800 mm ceiling column + CY0001
- 1000 mm ceiling column + CY0001
- 1200 mm ceiling column + CY0001

- (HZACCY010125)
- (HZACCY010200)
- (HZACCY010300)
- (HZACCY010400)
- (HZACCY010500)
- (HZACCY010600)
- (HZACCY010800)
- (HZACCY011000)
- (HZACCY011200)



Example: 500 mm ceiling column with canopy CY0001

## SYSTEM CONFIGURATION – SINGLE COMPONENTS

# A Modular System

### for Numerous Applications

Components can be assembled in the manner of a modular system and can be tailored to your individual requirements. Of course, we are always happy to assist you with advice, should you have any questions regarding the various possible combinations.

#### LENGTHS AND DESCRIPTIONS

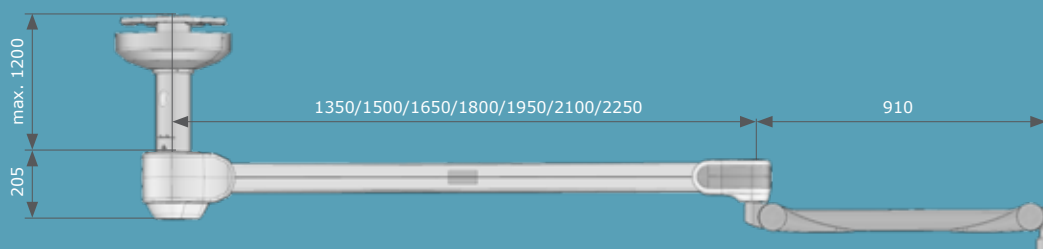
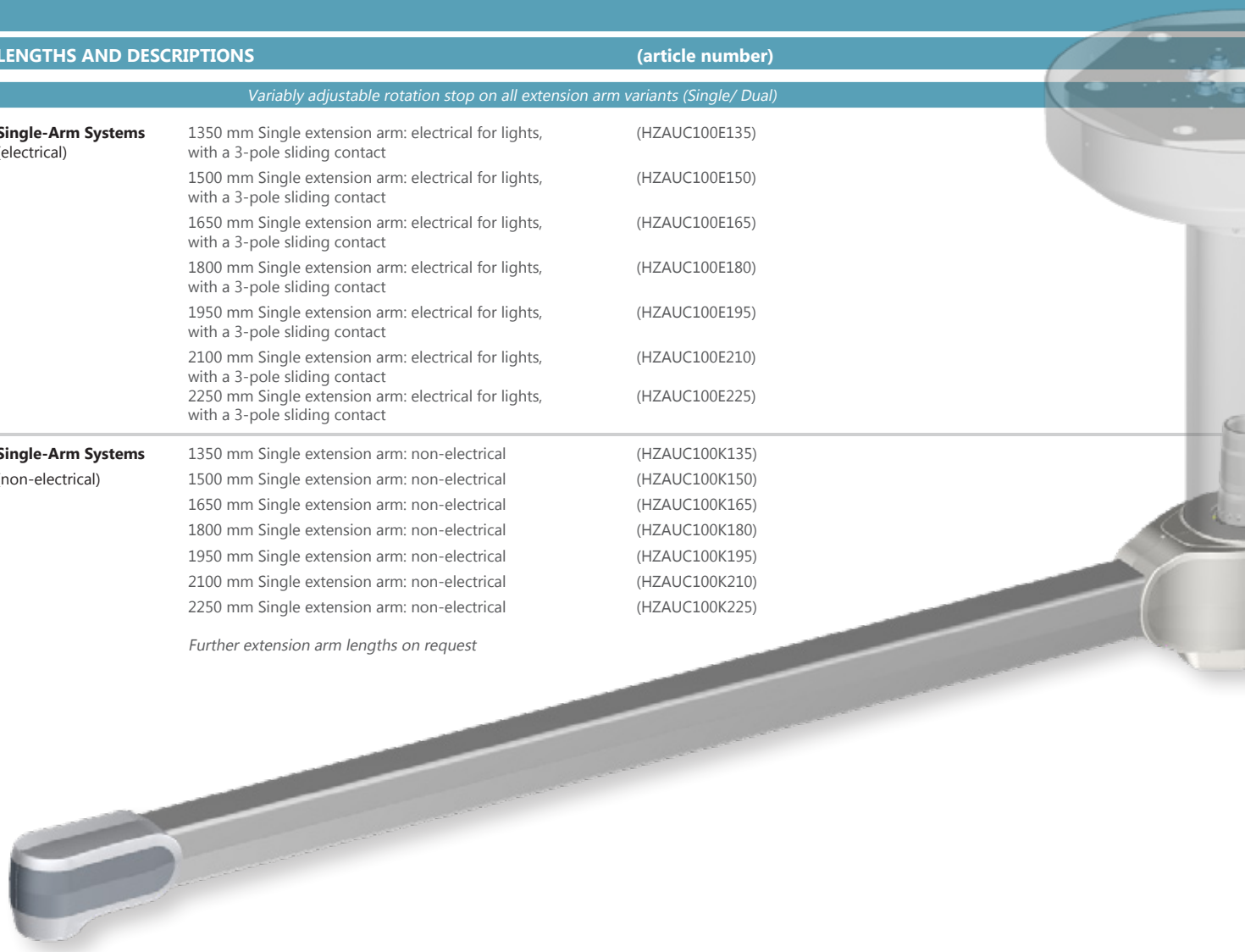
#### (article number)

*Variably adjustable rotation stop on all extension arm variants (Single/ Dual)*

Single-Arm Systems (electrical)		(article number)
1350 mm Single extension arm: electrical for lights, with a 3-pole sliding contact		(HZAUC100E135)
1500 mm Single extension arm: electrical for lights, with a 3-pole sliding contact		(HZAUC100E150)
1650 mm Single extension arm: electrical for lights, with a 3-pole sliding contact		(HZAUC100E165)
1800 mm Single extension arm: electrical for lights, with a 3-pole sliding contact		(HZAUC100E180)
1950 mm Single extension arm: electrical for lights, with a 3-pole sliding contact		(HZAUC100E195)
2100 mm Single extension arm: electrical for lights, with a 3-pole sliding contact		(HZAUC100E210)
2250 mm Single extension arm: electrical for lights, with a 3-pole sliding contact		(HZAUC100E225)

Single-Arm Systems (non-electrical)		(article number)
1350 mm Single extension arm: non-electrical		(HZAUC100K135)
1500 mm Single extension arm: non-electrical		(HZAUC100K150)
1650 mm Single extension arm: non-electrical		(HZAUC100K165)
1800 mm Single extension arm: non-electrical		(HZAUC100K180)
1950 mm Single extension arm: non-electrical		(HZAUC100K195)
2100 mm Single extension arm: non-electrical		(HZAUC100K210)
2250 mm Single extension arm: non-electrical		(HZAUC100K225)

*Further extension arm lengths on request*



# SYSTEM CONFIGURATION – DUAL COMPONENTS

## A Modular System

### in Versatile Combinations

Whether electrified or not - you have the choice. With two extension arms up to 2250 mm in length and a 360° rotation or adjustable rotation stop, different applications inside an extremely large rotation area can be supported. This means that with just one hybrid central axis in the hybrid operating theatre (e.g.), the two most important end devices are easily accessible at all times.

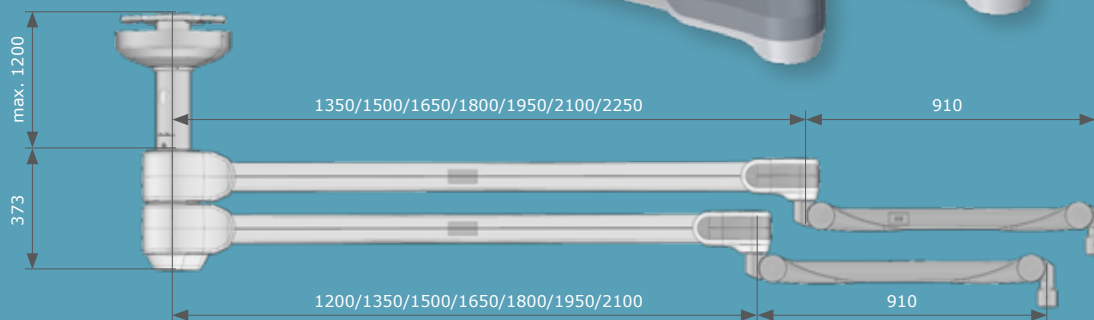
#### LENGTHS AND DESCRIPTIONS

(article number)

*Variably adjustable rotation stop on all extension arm variants (Single/ Dual)*

<b>Dual-Arm Systems</b> (2x electrical)	Dual extension arm: 1350 mm electrical for lights, 3-pole sliding contact & 1200 mm electrical Dual extension arm: 1500 mm electrical for lights, 3-pole sliding contact & 1350 mm electrical Dual extension arm: 1650 mm electrical for lights, 3-pole sliding contact & 1500 mm electrical Dual extension arm: 1800 mm electrical for lights, 3-pole sliding contact & 1650 mm electrical Dual extension arm: 1950 mm electrical for lights, 3-pole sliding contact & 1800 mm electrical Dual extension arm: 2100 mm electrical for lights, 3-pole sliding contact & 1950 mm electrical Dual extension arm: 2250 mm electrical for lights, 3-pole sliding contact & 2100 mm electrical	(HZAUC200EE135120) (HZAUC200EE150135) (HZAUC200EE165150) (HZAUC200EE180165) (HZAUC200EE195180) (HZAUC200EE210195) (HZAUC200EE225210)
<b>Dual-Arm Systems</b> (1x electrical, upper)	Dual extension arm: 1350 mm electrical for lights, 3-pole sliding contact & 1200 mm non-electrical Dual extension arm: 1500 mm electrical for lights, 3-pole sliding contact & 1350 mm non-electrical Dual extension arm: 1650 mm electrical for lights, 3-pole sliding contact & 1500 mm non-electrical Dual extension arm: 1800 mm electrical for lights, 3-pole sliding contact & 1650 mm non-electrical Dual extension arm: 1950 mm electrical for lights, 3-pole sliding contact & 1800 mm non-electrical Dual extension arm: 2100 mm electrical for lights, 3-pole sliding contact & 1950 mm non-electrical Dual extension arm: 2250 mm electrical for lights, 3-pole sliding contact & 2100 mm non-electrical	(HZAUC200EK135120) (HZAUC200EK150135) (HZAUC200EK165150) (HZAUC200EK180165) (HZAUC200EK195180) (HZAUC200EK210195) (HZAUC200EK225210)
<b>Dual-Arm Systems</b> (1x electrical, lower)	Dual extension arm: 1350 mm non-electrical & 1200 mm electrical for lights, 3-pole sliding contact Dual extension arm: 1500 mm non-electrical & 1350 mm electrical for lights, 3-pole sliding contact Dual extension arm: 1650 mm non-electrical & 1500 mm electrical for lights, 3-pole sliding contact Dual extension arm: 1800 mm non-electrical & 1650 mm electrical for lights, 3-pole sliding contact Dual extension arm: 1950 mm non-electrical & 1800 mm electrical for lights, 3-pole sliding contact Dual extension arm: 2100 mm non-electrical & 1950 mm electrical for lights, 3-pole sliding contact Dual extension arm: 2250 mm non-electrical & 2100 mm electrical for lights, 3-pole sliding contact	(HZAUC200KE135120) (HZAUC200KE150135) (HZAUC200KE165150) (HZAUC200KE180165) (HZAUC200KE195180) (HZAUC200KE210195) (HZAUC200KE225210)
<b>Dual-Arm Systems</b> (non-electrical)	Dual extension arm: 1350 mm non-electrical & 1200 mm non-electrical Dual extension arm: 1500 mm non-electrical & 1350 mm non-electrical Dual extension arm: 1650 mm non-electrical & 1500 mm non-electrical Dual extension arm: 1800 mm non-electrical & 1650 mm non-electrical Dual extension arm: 1950 mm non-electrical & 1800 mm non-electrical Dual extension arm: 2100 mm non-electrical & 1950 mm non-electrical Dual extension arm: 2250 mm non-electrical & 2100 mm non-electrical	(HZAUC200KK135120) (HZAUC200KK150135) (HZAUC200KK165150) (HZAUC200KK180165) (HZAUC200KK195180) (HZAUC200KK210195) (HZAUC200KK225210)

*Further extension arm lengths on request*



## Various End Devices

### X-ray Protective Shields (upper body protection) or Modern LED Lamps

Depending on the customer's requirements, the matching end device, including a Portegra2 spring arm (length 910 mm), can be easily mounted on the extension arm(s). The products listed below are just a few examples of the many possibilities.



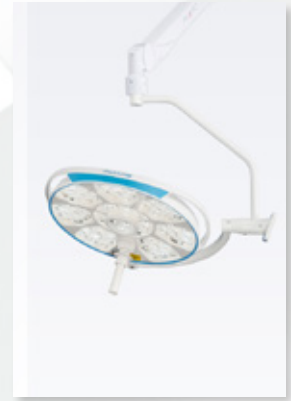
Upper body X-ray protection OT54, including PT2 spring arm, standard/inverted



Upper body X-ray protection OT50, including PT2 spring arm, standard/inverted



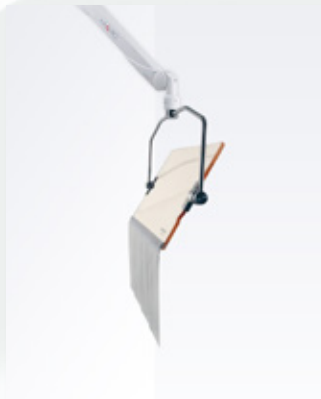
Examination Lamp YLED-1F, including PT2 spring arm



Large OR Lamp LED6 MC, including PT2 spring arm



Upper body X-ray protection OT50003, including PT2 spring arm



Upper body X-ray protection OT80002, including PT2 spring arm



OP Lamp LED2 SC, including PT2 spring arm



OP Lamp LED3 SC, including PT2 spring arm

#### DEVICES AND DESCRIPTIONS

#### (article number)

##### End Device Shield (with spring arm)

OT50001, shield OT25B05 with 800 mm connection element and preset 910 mm PT2 spring arm  
 OT50001, shield OT25B050 with 600 mm connection element and preset 910 mm PT2 spring arm  
 OT50001, shield OT25B05I inverted, with preset 910 mm PT2 spring arm  
 OT54001, shield OT54B01 with preset 910 mm PT2 spring arm  
 OT54001, shield OT54B01I inverted, with preset 910 mm PT2 spring arm  
 OT50003, shield OT40B04 with preset 910 mm PT2 spring arm  
 OT80002, shield OT40B02 with preset 910 mm PT2 spring arm

(OT50001FA)  
 (OT50001V60FA)  
 (OT50001IFA)  
 (OT54001FA)  
 (OT54001IFA)  
 (OT50003FA)  
 (OT80002FA)

##### End Device Lamp (with spring arm)

YLED-1F, LED lamp with preset 910 mm PT2 spring arm and internal power supply unit  
 LED150F, LED lamp with preset 910 mm PT2 spring arm and external power supply unit  
 LED2 SC, lamp with preset 910 mm PT2 spring arm and external power supply unit  
 LED3 SC, lamp with preset 910 mm PT2 spring arm and external power supply unit  
 LED6 MC, lamp with preset 910 mm PT2 spring arm and external power supply unit  
 LED6 MC, lamp comparable with LE606911, with laser pointer  
 LED6 MC, lamp comparable with LE606911, without laser pointer, includes camera preparation and shadow management

(LE6017100)  
 (LE6026100)  
 (LE70044FA)  
 (LE70072FA)  
 (LE6069111)  
 (LE6069111L)  
 (LE6069111KVS)



### MAVIG GmbH Head Office

Stahlgruberring 5  
81829 Munich  
Germany

P.O. Box 82 03 62  
81803 Munich  
Germany

Phone +49 (0) 89 420 96 0  
Fax +49 (0) 89 420 96 200  
E-mail info@mavig.com

### GLOBAL MAVIG LOCATIONS

#### Nordic & Baltic countries

##### MAVIG Nordic

Stockholm  
Sweden

Phone +46 (0) 722 25 25 68  
E-mail larsson@mavig.com

#### Benelux, GB, Ireland

##### MAVIG B.V.

Mercuriusweg 86  
2516AW The Hague  
The Netherlands

Phone +31 (0) 70 33 11 688  
Mobile +31 (0) 61 595 43 48  
E-mail simmonds@mavig.nl

#### France

##### MAVIG France SARL

66, Ave. des Champs Elysées  
F-75008 Paris  
France

Phone +33 (0)1 30 59 46 23  
Fax +33 (0)1 30 59 46 23  
E-mail info@mavig.fr

#### South-East Europe

##### MAVIG South-East Europe

Ljubljana  
Slovenia

Phone +386 (40) 6 33 900  
E-mail dejak@mavig.com

### FOREIGN OFFICES

#### USA & Canada

Ti-Ba Enterprises, INC.

25 Hytec Circle  
Rochester, NY 14606  
USA

Phone +1 (1) 585 247 1212  
Fax +1 (1) 585 247 1395  
E-mail mavigusteam@mavig.com

#### Middle East & North Africa

Mena Medical Development

Ashrafieh – Adlieh Square – Alfaras St.  
- Alboustany Building, 5th floor  
Beirut  
Lebanon

Phone +961 14 23 499  
Fax +961 14 26 499  
E-mail mavig@mena-md.com

#### Russian Federation

AO Sante Medical Systems

Novodmitrovskaya 2, Bld.1  
127015 Moscow  
Russia

Phone +7 499 551 55 73/75  
E-mail info@sante.ru

# www.mavig.com